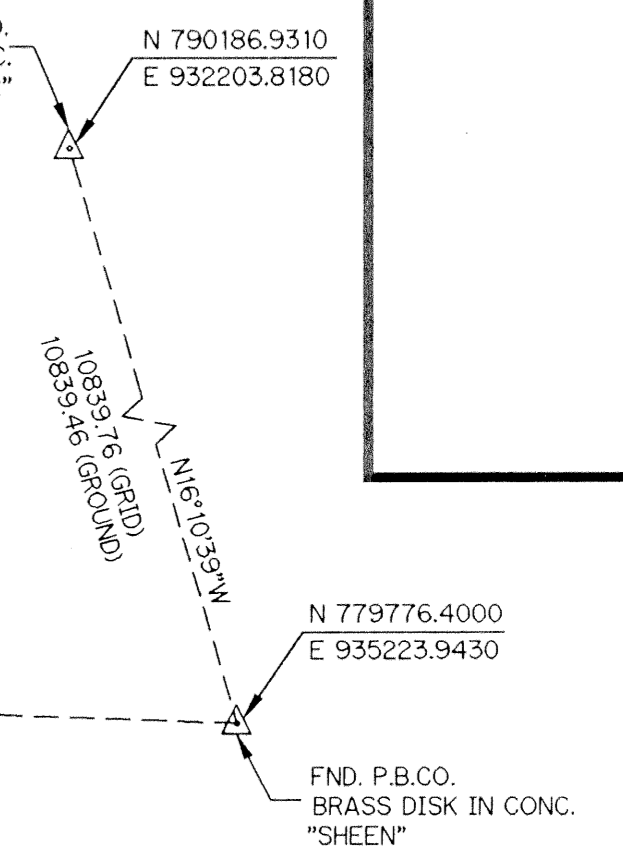
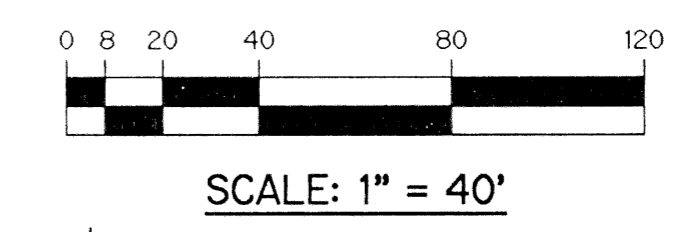
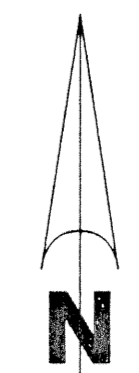


# VALENCIA FALLS - PLAT THREE

THIS INSTRUMENT PREPARED BY  
PERRY C. WHITE, P.S.M. 4213, STATE OF FLORIDA  
LAWSON, NOBLE AND WEBB, INC.  
ENGINEERS PLANNERS SURVEYORS  
420 COLUMBIA DRIVE  
WEST PALM BEACH, FLORIDA 33409  
LB-6674

BEING A REPLAT OF A PORTION OF TRACTS 57, 58, 59, 68, 69, 70, 71, 72, 89, 90, 91, 92 AND 93  
PALM BEACH FARMS COMPANY PLAT NO. 1 AS RECORDED IN PLAT BOOK 2, PAGES 26 THROUGH 28  
OF THE PUBLIC RECORDS OF PALM BEACH COUNTY, FLORIDA. LYING IN  
SECTION 9, TOWNSHIP 46 SOUTH, RANGE 42 EAST.

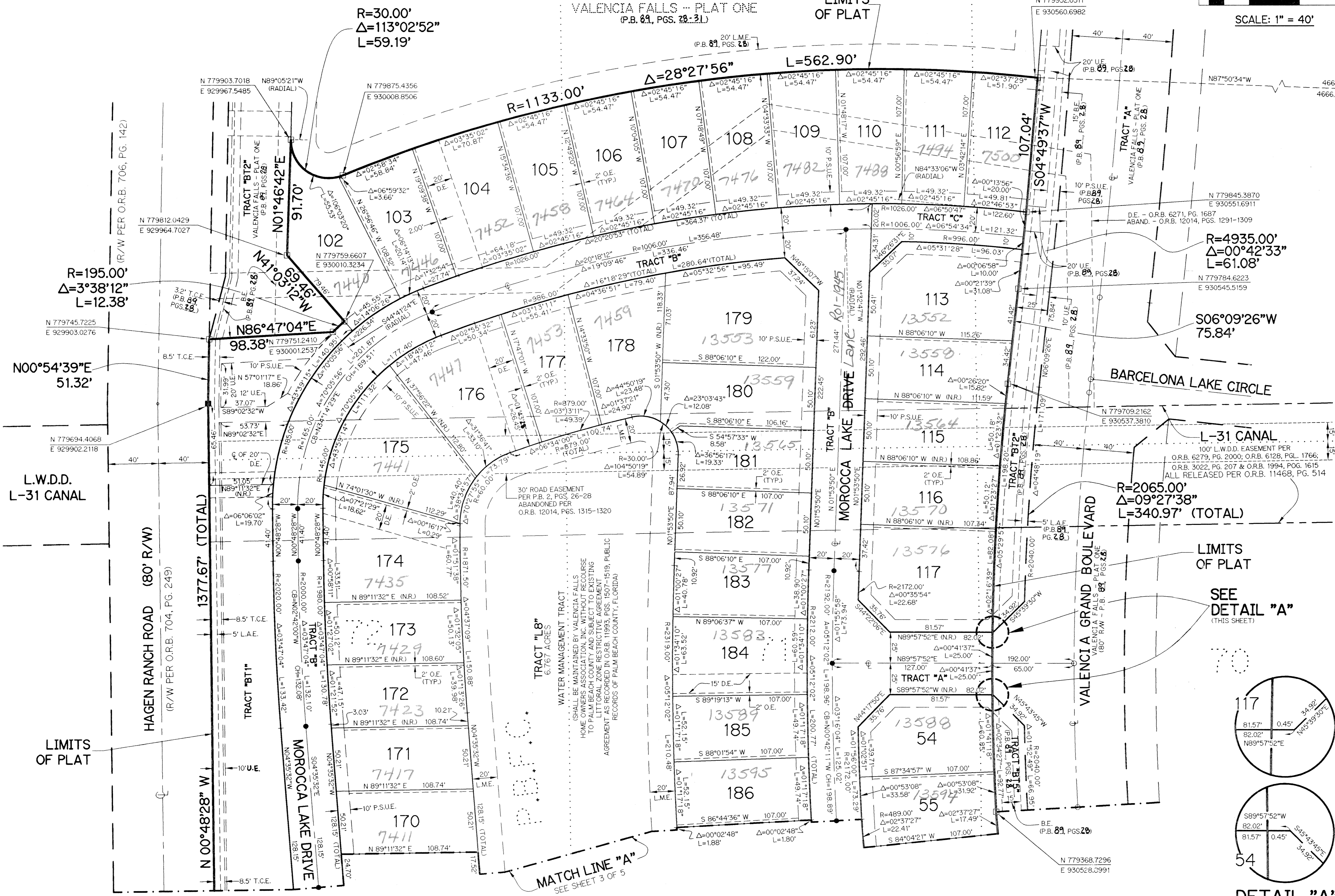
SHEET 2 OF 5 JUNE, 2000



P.B.F.C.

TRACT "L"  
VALENCIA FALLS - PLAT ONE  
(P.B. 81, PGS. 28-31)

LIMITS  
OF PLAT



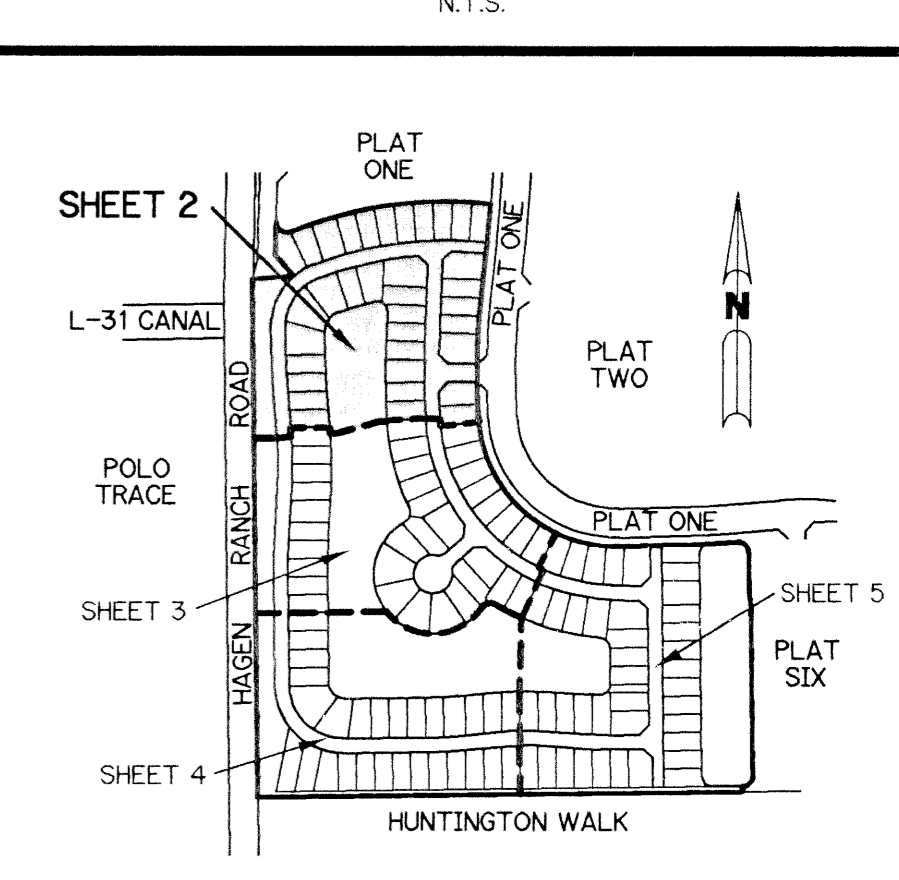
### LEGEND:

- - SET PERMANENT REFERENCE MONUMENT, L.B. #6674
- - FOUND PERMANENT REFERENCE MONUMENT, L.B. #6674
- - SET PERMANENT CONTROL POINT, L.B. #6674
- - FOUND PERMANENT CONTROL POINT, L.B. #6674
- Δ - DELTA ANGLE
- ABAND. - ABANDONED
- Δ - BUFFER EASEMENT
- BE - CHORD BEARING
- CB - CHORD DISTANCE
- CL - CENTERLINE
- DE - DEED BOOK
- DE - DRAINAGE EASEMENT
- ARC - ARC LENGTH
- L - LIMITED ACCESS EASEMENT
- L.M.A.E. - LAKE MAINTENANCE ACCESS EASEMENT
- L.M.E. - LAKE MAINTENANCE EASEMENT
- L.W.D.D. - LAKE WORTH DRAINAGE DISTRICT
- N.R. - NOT RADIAL
- N.T.S. - NOT TO SCALE
- O.E. - OVERHANG EASEMENT
- O.R.B. - OFFICIAL RECORD BOOK
- P.B. - PLAT BOOK
- PGS. - PAGES
- P.C. - POINT OF COMMENCEMENT
- P.I. - POINT OF INTERSECTION
- P.S.M. - PROFESSIONAL SURVEYOR AND MAPPER
- R - RADIUS
- RAD. - RADIAL
- R/W - RIGHT-OF-WAY
- S.D.E. - SWALE DRAINAGE EASEMENT
- S.T. - SURVEY TIE
- T.C.E. - TEMPORARY CONSTRUCTION EASEMENT (TYP.)
- TYP. - TYPICAL
- U.E. - UTILITY EASEMENT
- P.S.U.E. - PRIVATE SPECIFIC UTILITY EASEMENT
- P.B.F.C. - PALM BEACH FARMS COMPANY PLAT NO. 1 (P.B. 2, PGS. 26 - 28)
- N 737648.0171 E 905258.2326 - DENOTES STATE PLANE COORDINATES
- - DENOTES TRACT NUMBER PER PALM BEACH FARMS COMPANY PLAT NO. 1 (P.B. 2, PG. 26)

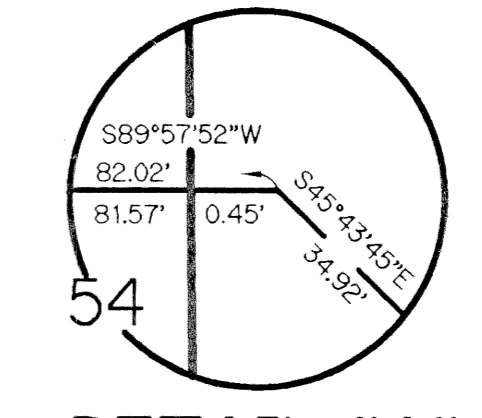
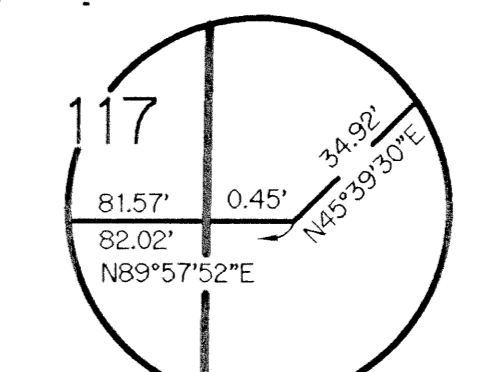
### NOTE:

COORDINATES SHOWN ARE GRID COORDINATES  
DATUM = NAD 83 (1990 ADJUSTMENT)  
ZONE = FLORIDA EAST ZONE  
LINEAR UNIT = U.S. SURVEY FEET  
COORDINATE SYSTEM = 1983 STATE PLANE TRANSVERSE MERCATOR PROJECTION  
ALL DISTANCES ARE GROUND  
SCALE FACTOR = 1.0000278  
PLAT BEARING = GRID BEARING  
NO ROTATION

### KEY MAP



SEE  
DETAIL "A"  
(THIS SHEET)



DETAIL "A"  
SCALE: 1" = 1"

MATCH LINE "A"  
SEE SHEET 3 OF 5

REVISION  
DATE  
BY  
DESCRIPTION  
89  
PL 900  
B  
51  
457  
33446  
POLLO TRACE PRD